

SAN SABA

3,552 Sq. Ft. | 4 BR | 3.5 BA



Two-story spacious home with soaring ceilings. This luxurious floor plan offers a large game room upstairs and formal living or study/office downstairs. The private master suite comes standard with bay windows and a door that leads to the covered patio. This open concept plan features a luxurious triple countertop kitchen. Total living 3561 sq ft.



[Esperanzahomes.com](https://esperanzahomes.com)

The artistic renderings of the floorplan and front elevation may not reflect the exact features of this home being offered and are subject to change without notice. ©2021 Esperanza Homes

Modified 05/24/22



SAN SABA

3,552 Sq. Ft. | 4 BR | 3.5 BA

ELEVATION OPTIONS



Traditional



Tuscan



Contemporary



Farmhouse



[Esperanzahomes.com](https://esperanzahomes.com)

The artistic renderings of the floorplan and front elevation may not reflect the exact features of this home being offered and are subject to change without notice. ©2021 Esperanza Homes

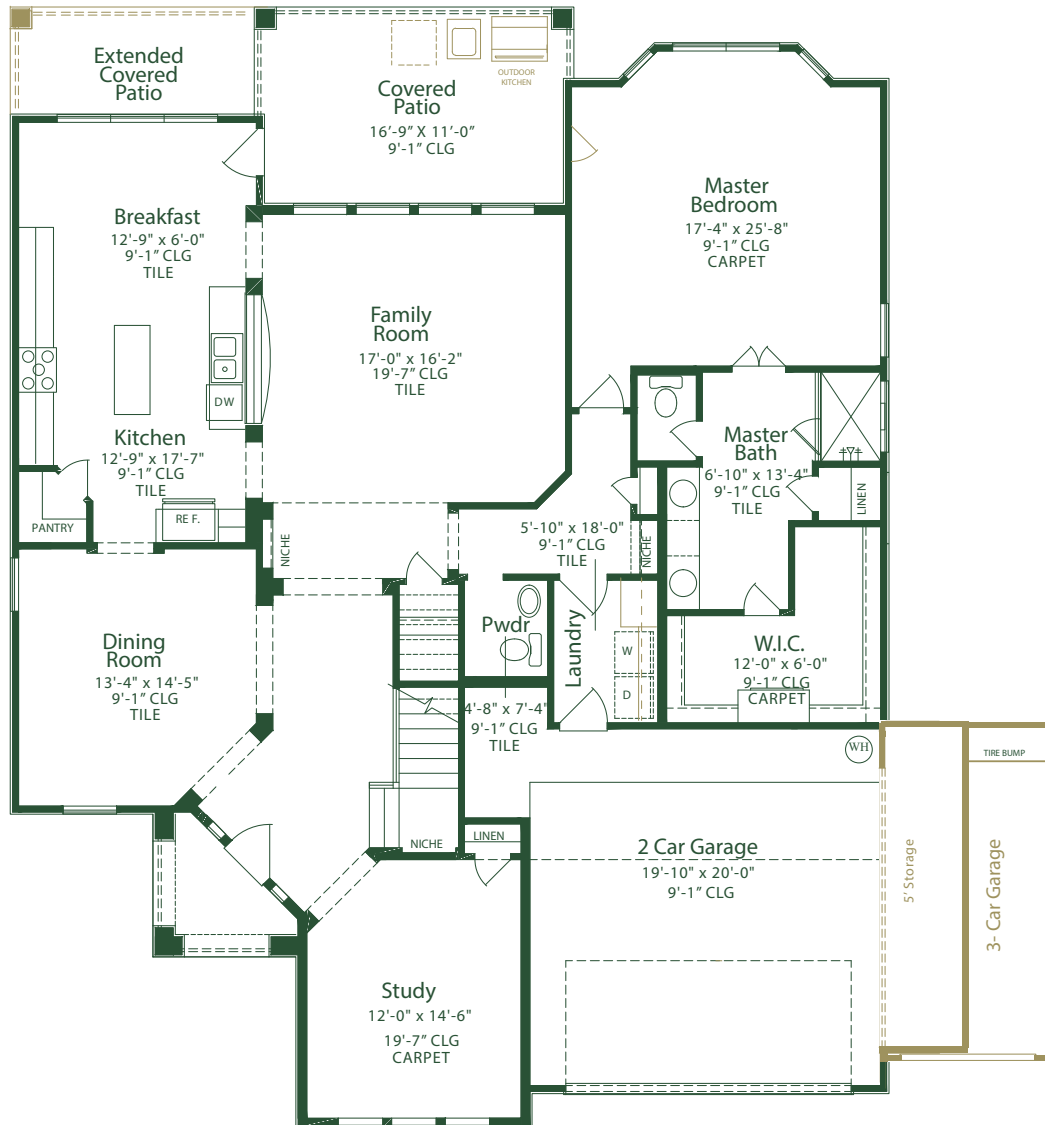
Modified 05/24/22



SAN SABA

3,552 Sq. Ft. | 4 BR | 3.5 BA

FLOORPLAN - MAIN LEVEL



FIRST FLOOR



[Esperanzahomes.com](https://www.esperanzahomes.com)

The artistic renderings of the floorplan and front elevation may not reflect the exact features of this home being offered and are subject to change without notice. ©2021 Esperanza Homes

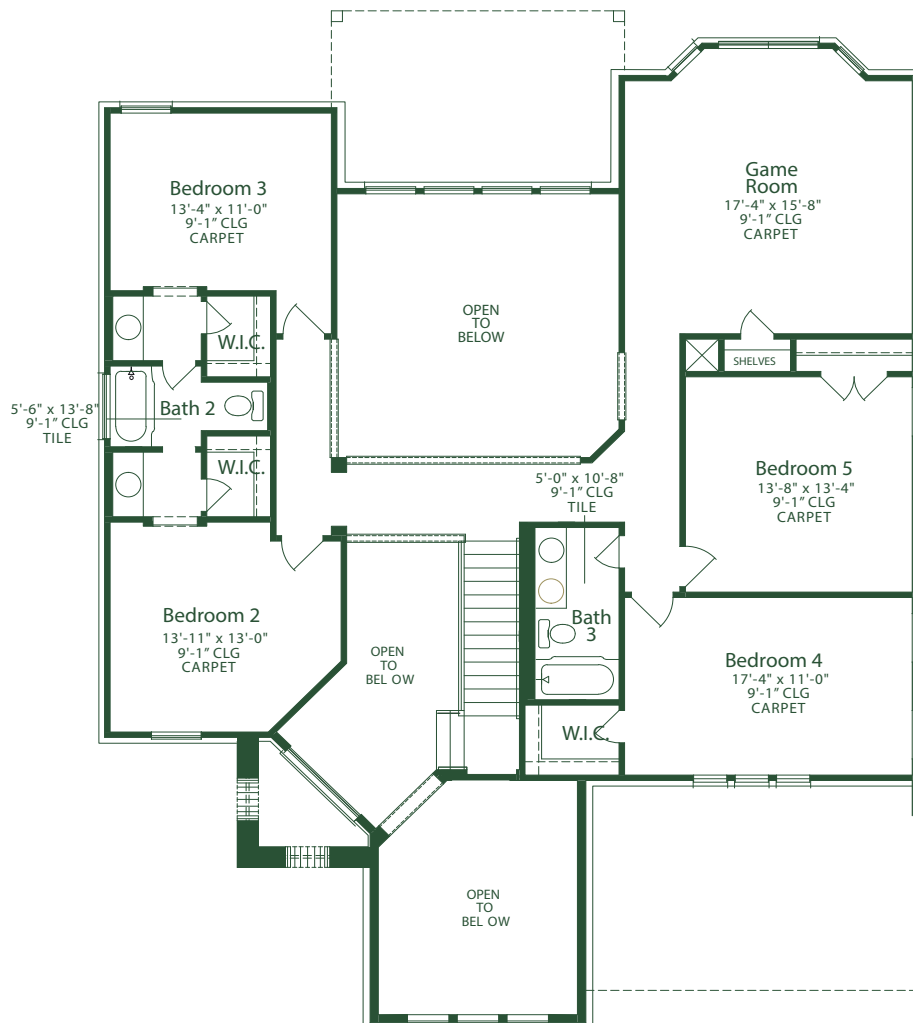
Modified 05/24/22



SAN SABA

3,552 Sq. Ft. | 4 BR | 3.5 BA

FLOORPLAN - UPPER LEVEL



SECOND FLOOR



[Esperanzahomes.com](https://esperanzahomes.com)

The artistic renderings of the floorplan and front elevation may not reflect the exact features of this home being offered and are subject to change without notice. ©2021 Esperanza Homes

Modified 05/24/22



SAN SABA

3,552 Sq. Ft. | 4 BR | 3.5 BA

STRUCTURAL OPTIONS



Esperanzahomes.com

The artistic renderings of the floorplan and front elevation may not reflect the exact features of this home being offered and are subject to change without notice. ©2021 Esperanza Homes

Modified 05/24/22

